

# COLOGIN FARMHOUSE....

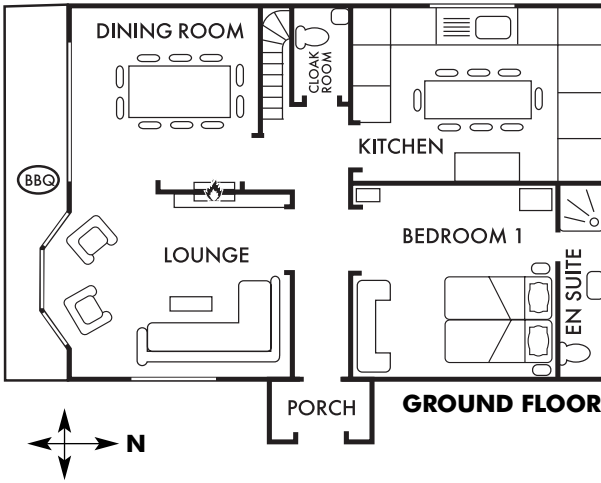
*A haven in the hills*



For large families or two families wanting to holiday together Cologin Farmhouse is the perfect solution. It's a traditional whitewashed stone farmhouse with private parking, south facing garden and lovely views. With five bedrooms (two ensuite), two reception rooms, two family bathrooms, a cloakroom and a farmhouse kitchen there's plenty of room too.

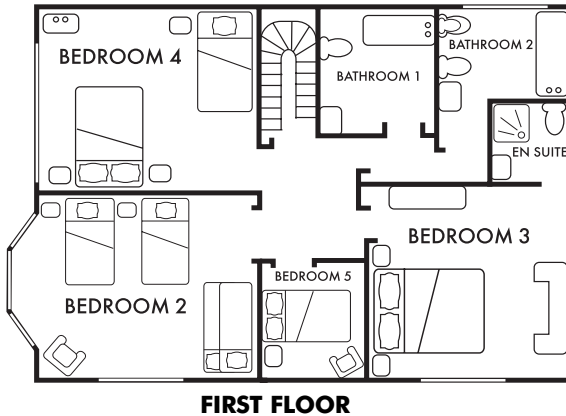
Cologin Farmhouse sits at a quiet corner of the site off a private driveway just past the Barn Country Inn – which used to be the cattle byre - part of the original courtyard farm buildings. This spacious family home boasts a traditional range in the kitchen, open fires in the lounge and dining room and five bedrooms sleeping a maximum 10 adults and four children. Cologin Farmhouse enjoys the same southerly aspect as Cruachan Cottage and is equipped to the same 'excellent' 4 star standard.





**This house is equipped to a very high standard with the following:**

- LCD television
- Open fires
- CD player
- DVD player
- Coffee table and lamp tables
- Dishwasher
- Washing machine/tumble dryer
- Oil fired range (Esse)
- Gas hob
- Electric oven
- Kitchen table and chairs
- Combination microwave oven
- American fridge freezer with ice and water dispenser
- Garden furniture (table & chairs)
- BBQ
- Leather sofas and armchairs
- Large dining table and chairs
- Kingsize double (ensuite) plus day bed
- Triple (double plus single) with wash hand basin
- Family (zip and link singles plus bunk beds)
- Standard double
- 'Zip and link' twin beds (ensuite) plus 'day bed' (ground floor)
- 2 family bathrooms, 2 ensuite, 1 cloakroom
- Ironing board, iron, Hoover, cleaning equipment



Centrally heated throughout with plenty of hot water for the two family bathrooms, two ensuite and cloakroom, Cologin Farmhouse is available to let all year round. Open fires are a focal point in the lounge and dining room and in the summer the south facing patio is a great place for a barbeque or al fresco meal.

Cologin Farmhouse has five large bedrooms including one 'zip and link' twin bedroom with ensuite at ground floor level. Bedroom layouts are flexible with 'day beds' in both the ensuite bedrooms. A cot, high chair and stairgate can be provided if required. A maximum of two well behaved pets are welcome at Cologin Farmhouse.



**COLOGIN**  
a haven in the hills